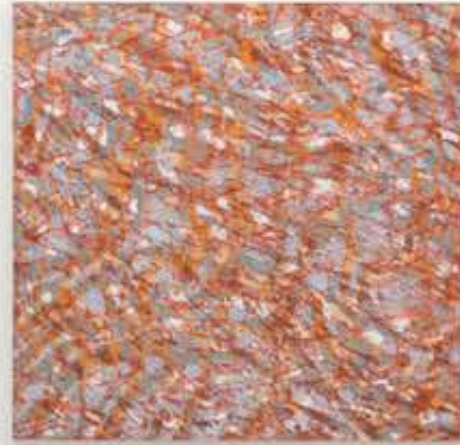


The background is a dense, abstract artwork by Liz Coats. It features a complex, layered composition of organic pigments, creating a rich palette of reds, purples, blues, and greens. The texture is highly detailed, with visible brushstrokes and a sense of depth, suggesting a multi-dimensional space. The overall effect is one of vibrant, naturalistic complexity.

29 July - 19 August, 2023

**Liz Coats** *Essence*  
*experiments with organic pigments*





B6

## **Essence: experiments with organic pigments**

Colours, their translucencies and opacities in rhythmic interplay with local light, stay with me in the studio and influence all the experiments with paint colours.

'Till recently I've explored acrylic colour relationships, with an organic approach to construction.

It was time to explore nature's colours in their essence when I moved to a studio on the rural edge of Canberra, with rain water tanks and biological waste water disposal. Since mid-2020, I've been researching and distilling traditional botanical pigments. Making paintings with the unique resonance and malleability of these fresh, yet ancient, substances feels like engaging with live colour.

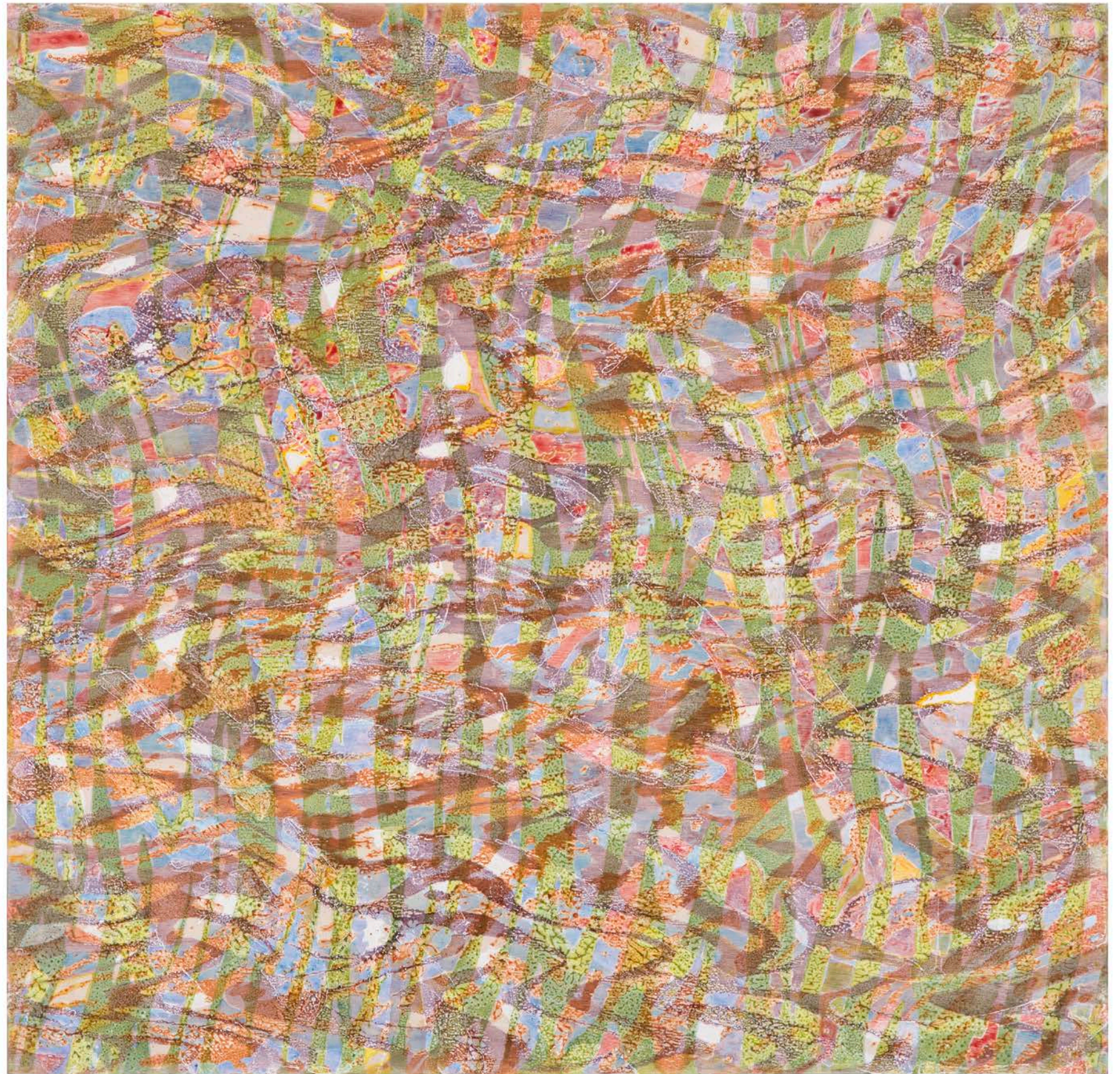
We see colours through light, while light in itself is invisible. Colours and their spacing in a painting are relatively two dimensional, while there is a phenomenal aspect to experiencing them that I seek to share.

Within the physical limits of a painting surface, colours can appear to shift in hue and spatial volume in relation to one another. This is my focus, while there is no definitive way of experiencing this. I suggest a slow and soft way of looking, leaving expectations behind. A sense of stillness with movement in colour relations is a natural effect of light fall and one's visual stance.

The *Essence* paintings are best positioned as one would a watercolour painting, away from direct sunlight. They are relatively water resistant and are adhered on firm grounds, without need of frames and glass. Colour substances contained in each painting are listed on the back of the painting.

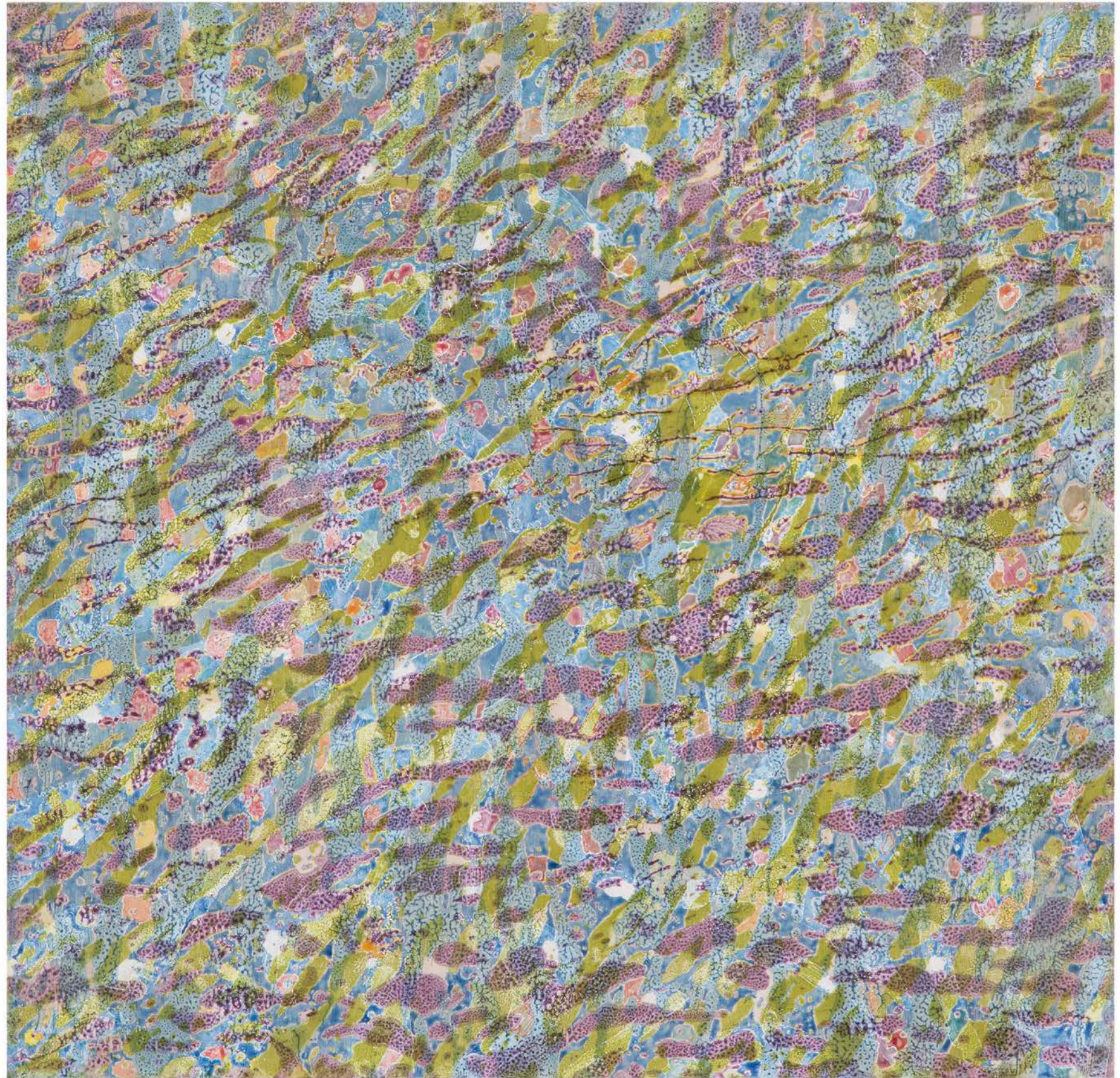
Liz Coats 2023  
[www.lizcoats.com.au](http://www.lizcoats.com.au)

pigments:  
fustic  
indigo  
lac  
madder  
weld



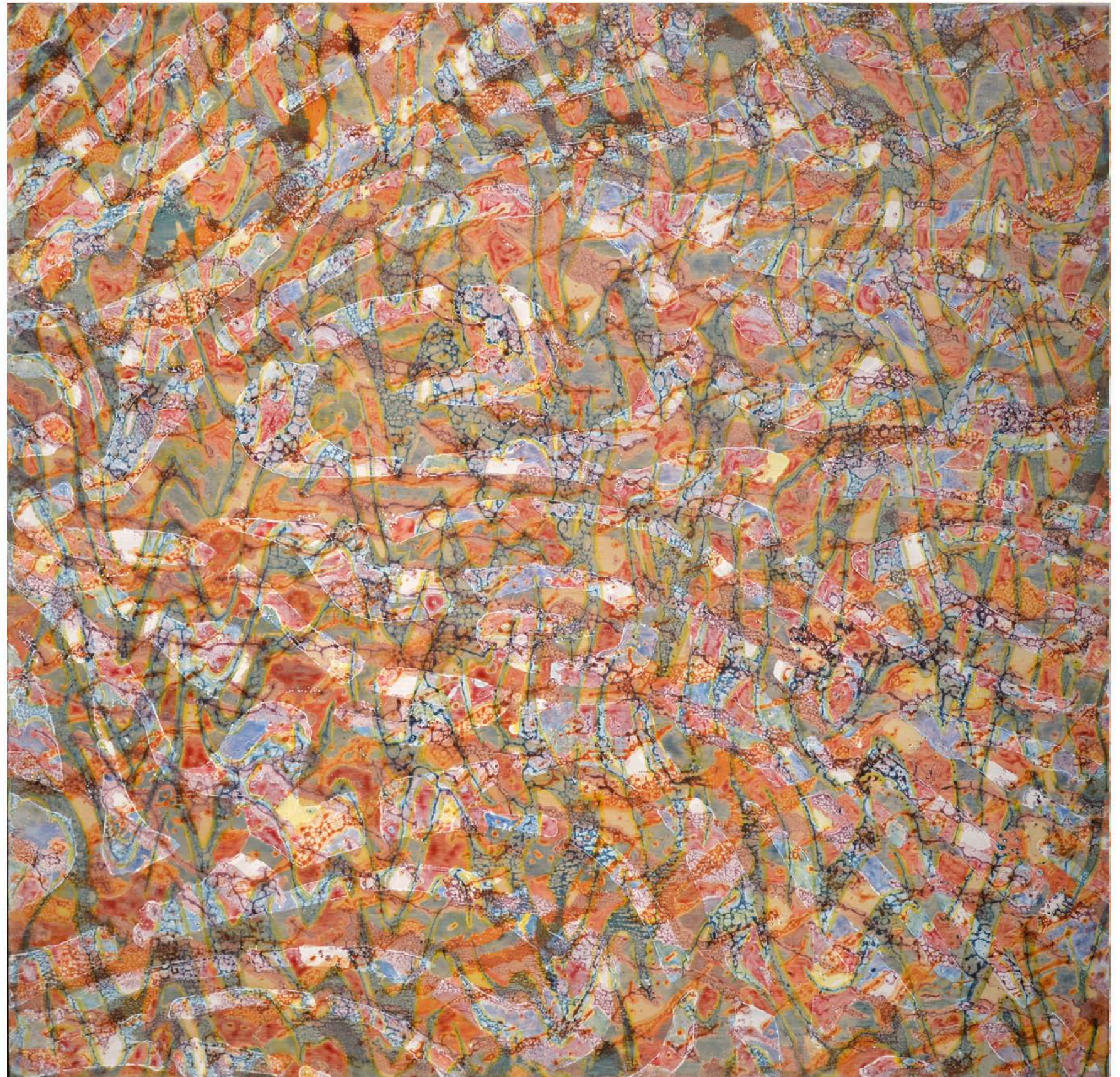
cat. 1, *Essence 5*, 2023, organic pigments on plywood panel, 74 x 76 cm

pigments:  
cochineal  
indigo  
lac  
madder  
weld



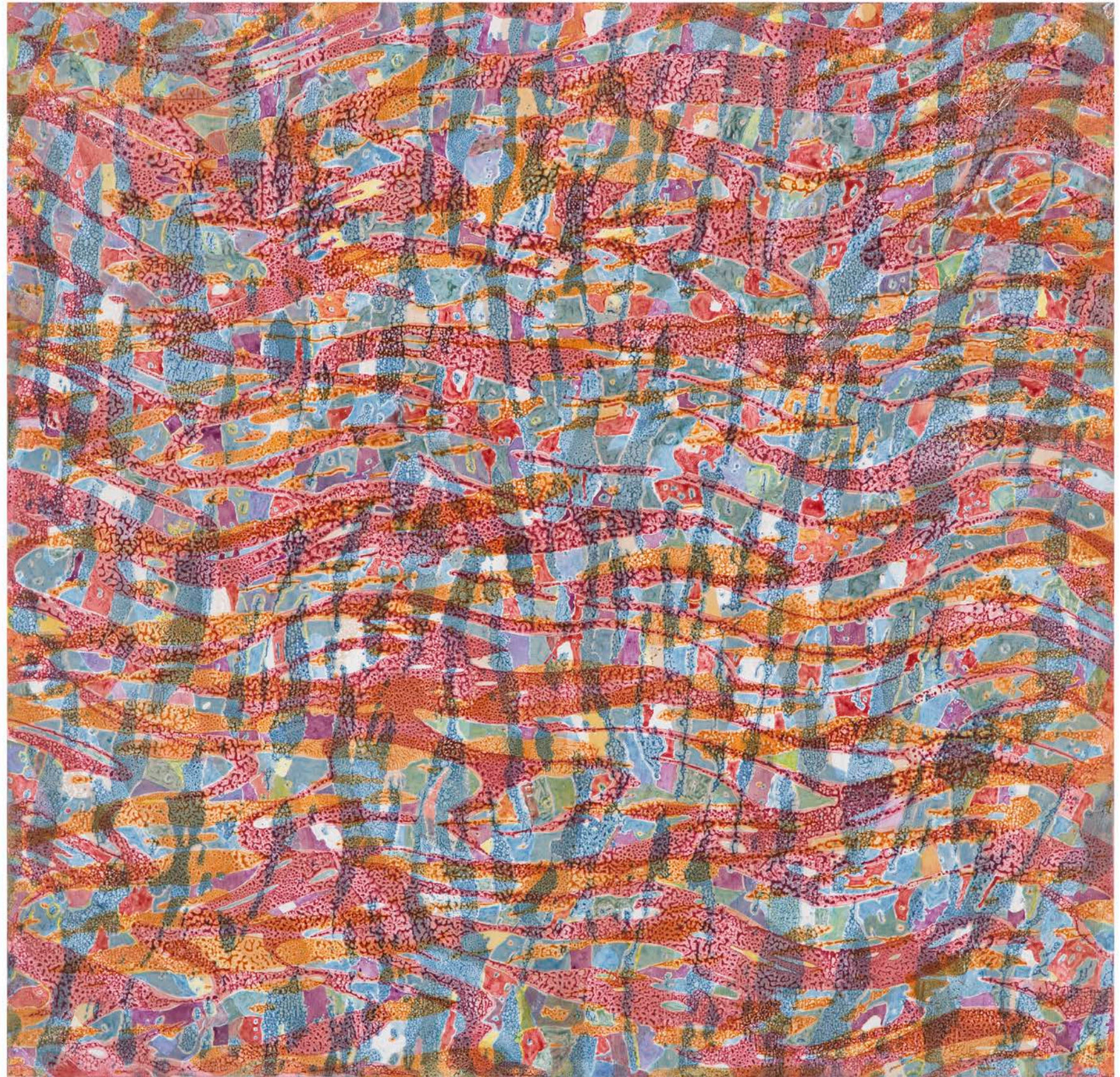
cat. 2, *Essence 15*, 2023, organic pigments on plywood panel, 74 x 76 cm

pigments:  
fustic  
indigo  
lac  
madder  
weld



cat. 3, *Essence 4*, 2023, organic pigments on plywood panel, 74 x 76 cm

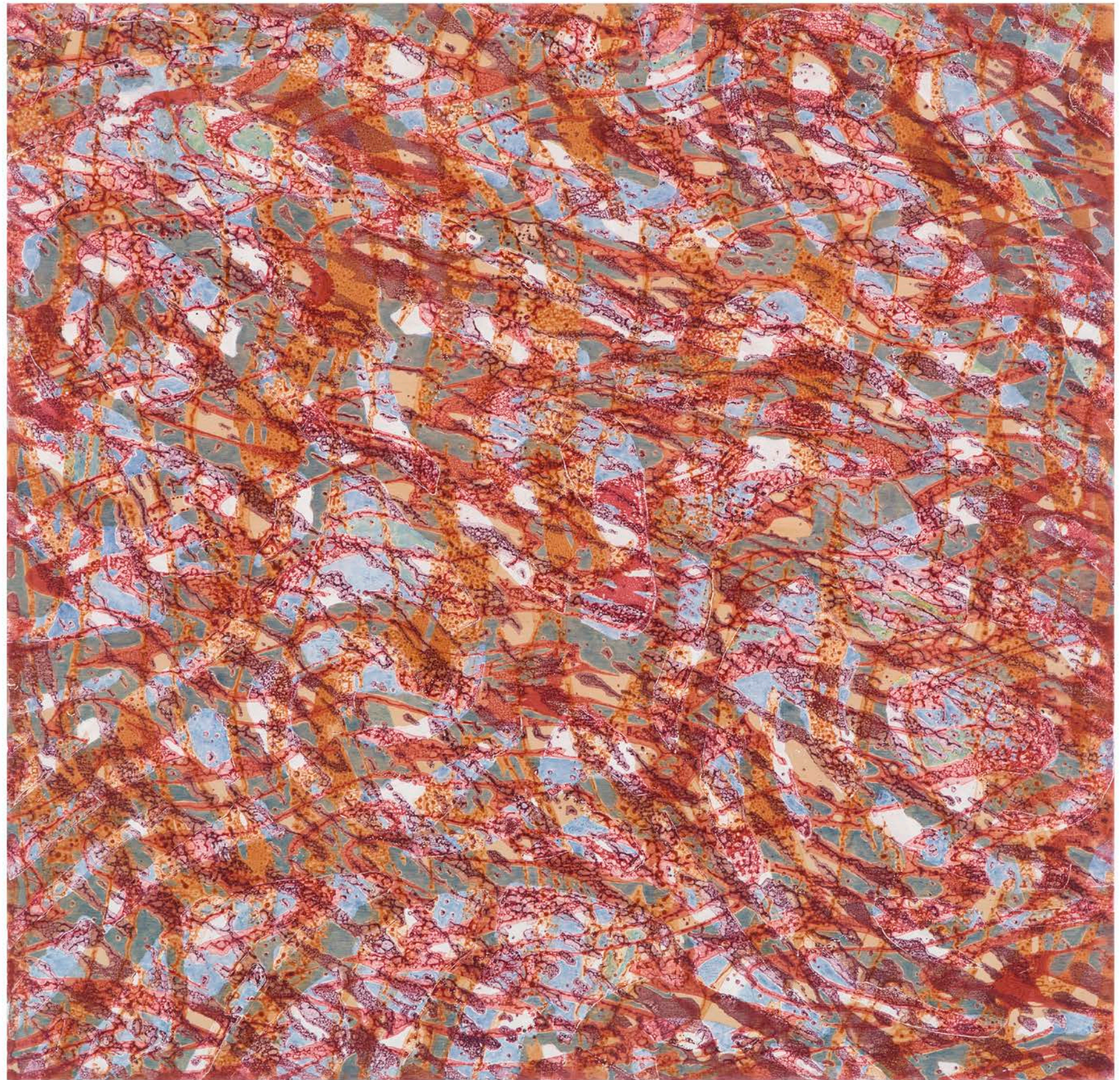
pigments:  
cochineal  
indigo  
fustic  
madder  
weld



cat. 4, *Essence 16*, 2023, organic pigments on plywood panel, 74 x 76 cm

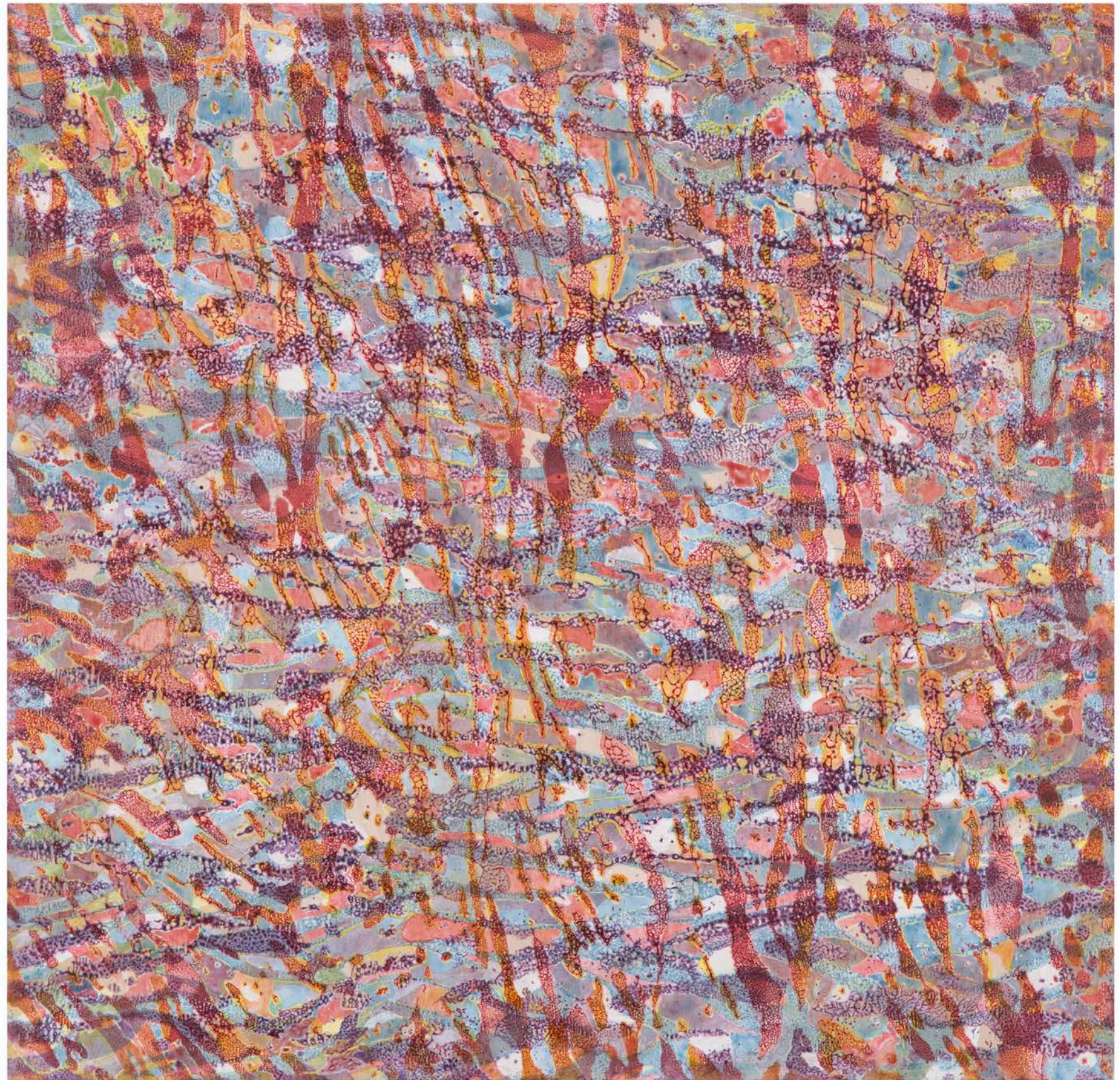


pigments:  
fustic  
indigo  
lac  
madder



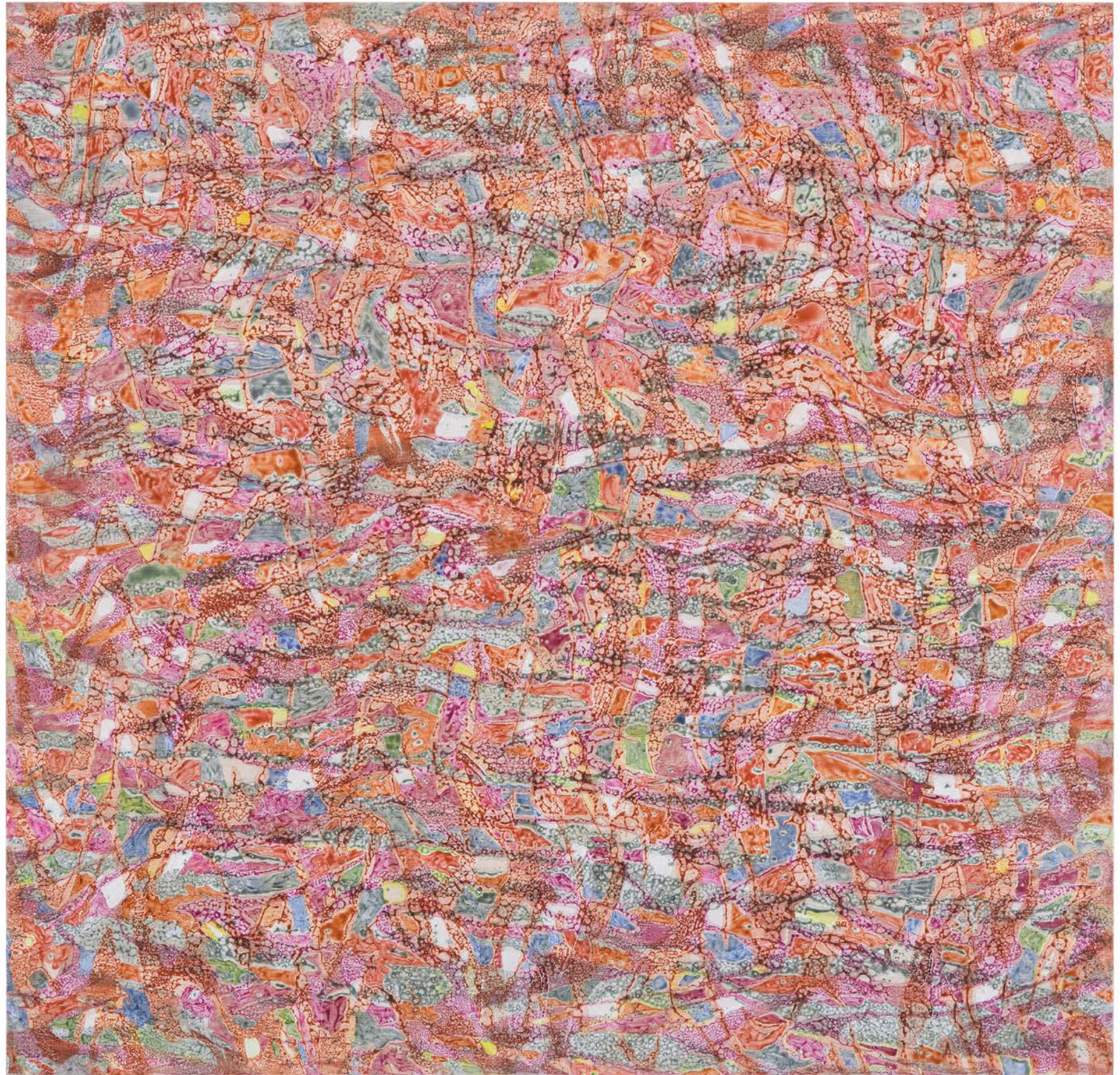
cat. 5, *Essence 7*, 2023, organic pigments on plywood panel, 74 x 76 cm

pigments:  
cochineal  
fustic  
indigo  
lac  
madder  
weld



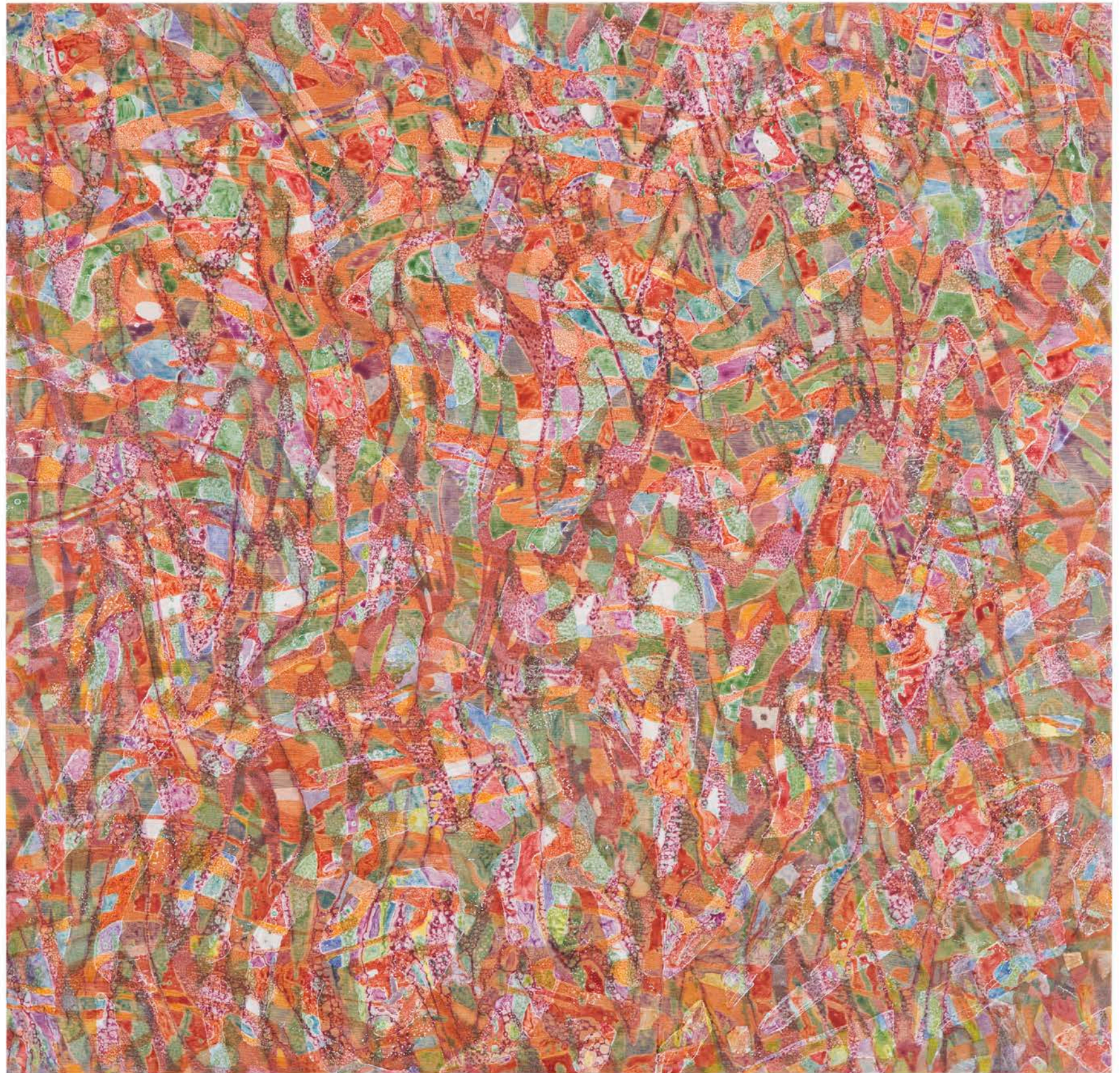
cat. 6, *Essence 14*, 2023, organic pigments on plywood panel, 74 x 76 cm

pigments:  
cochineal  
indigo  
lac  
madder  
weld



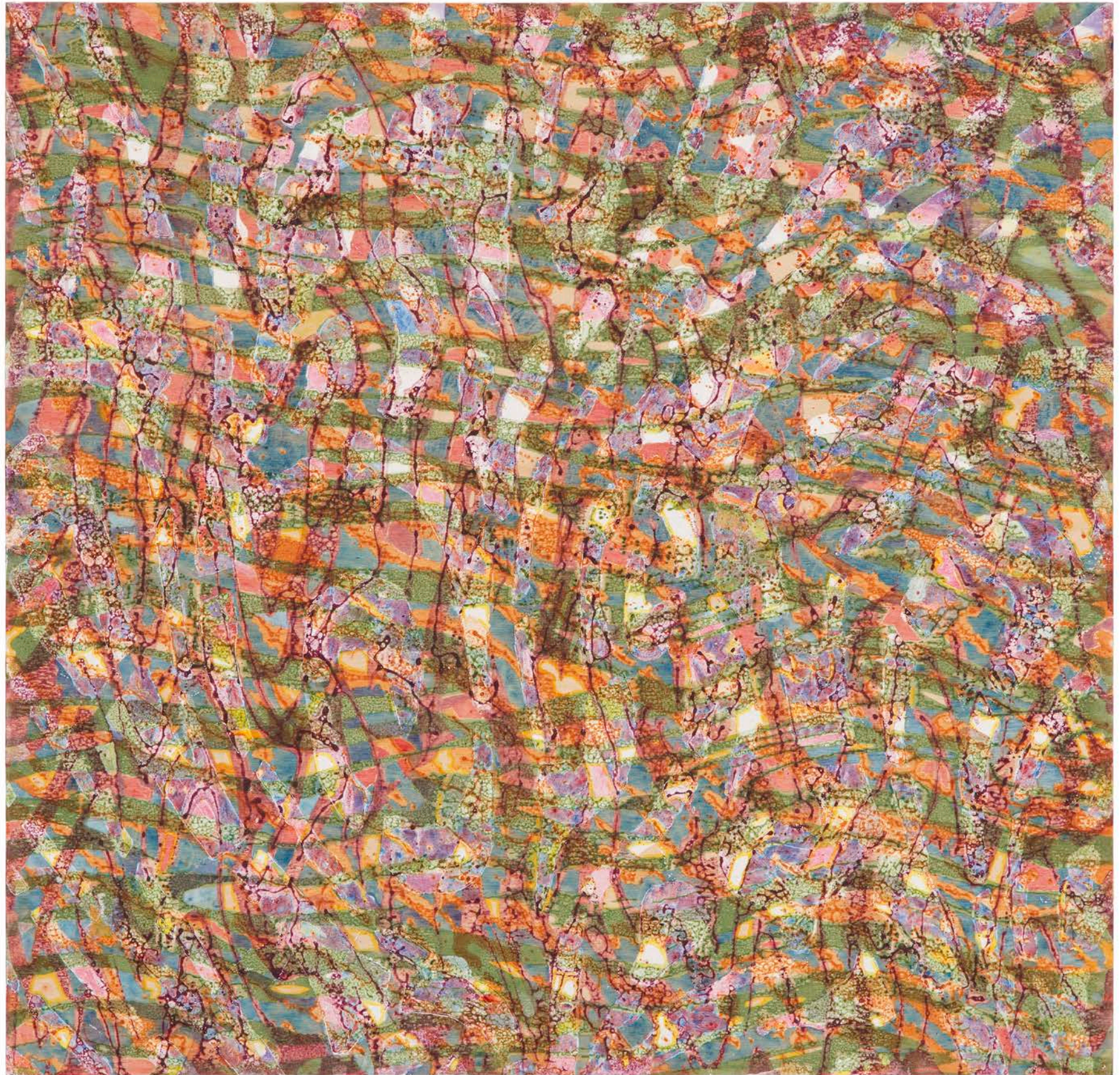
cat. 7, *Essence 10*, 2023, organic pigments on plywood panel, 74 x 76 cm

pigments:  
cochineal  
fustic  
indigo  
lac  
madder  
weld



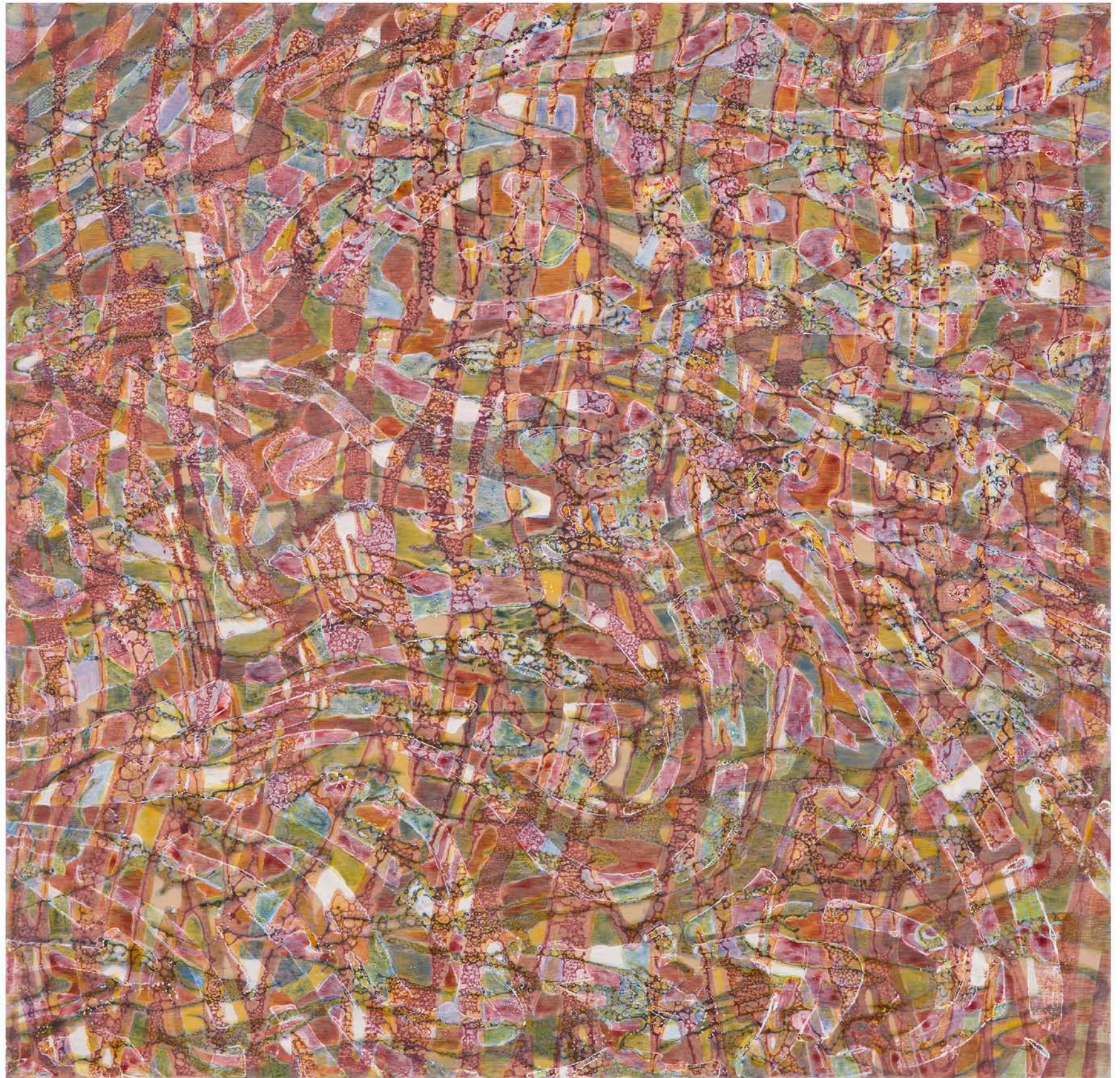
cat. 8, *Essence 8*, 2023, organic pigments on plywood panel, 74 x 76 cm

pigments:  
fustic  
indigo  
lac  
madder  
weld



cat. 9, *Essence 6*, 2023, organic pigments on plywood panel, 74 x 76 cm

pigments:  
indigo  
lac  
madder  
weld



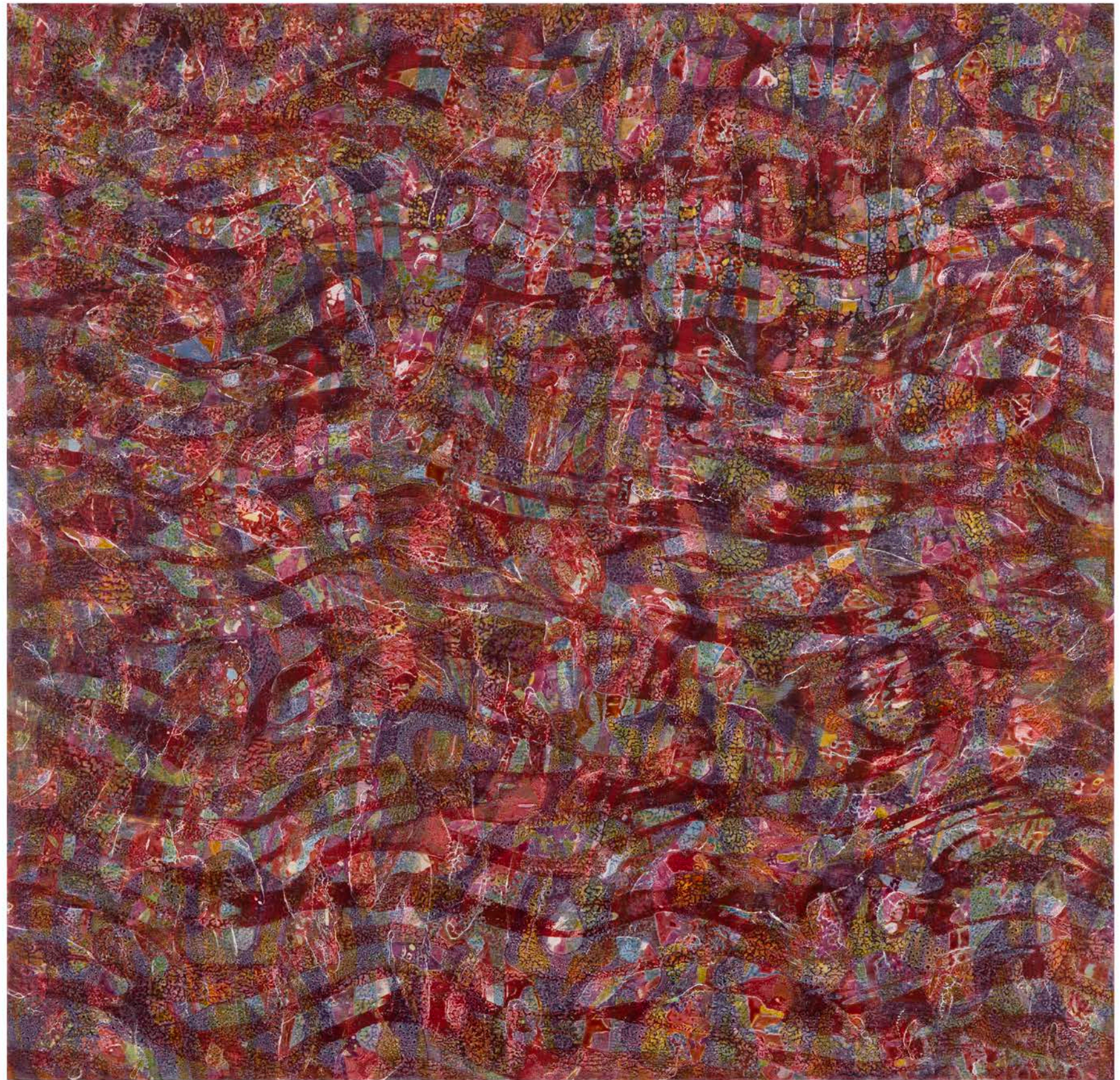
cat. 10, *Essence 3*, 2023, organic pigments on plywood panel, 74 x 76 cm

pigments:  
cochineal  
golden ochre  
indigo  
madder  
weld



cat. 11, *Essence 11*, 2023, organic pigments on plywood panel, 74 x 76 cm

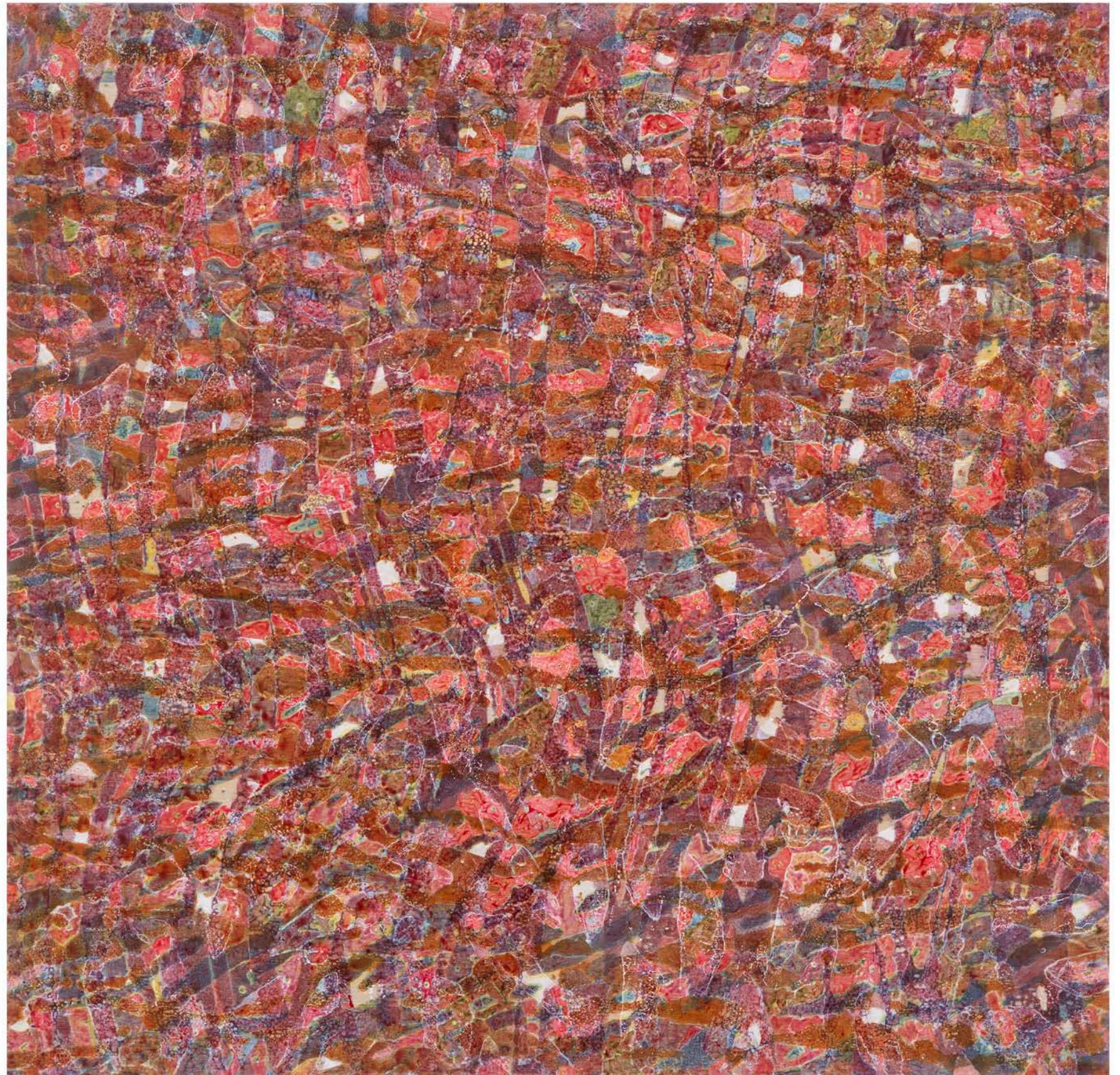
pigments:  
cochineal  
fustic  
indigo  
lac  
madder  
weld



cat. 12, *Essence 12*, 2023, organic pigments on plywood panel, 74 x 76 cm



pigments:  
cochineal  
indigo  
lac  
madder  
weld



cat. 13, *Essence 2*, 2023, organic pigments on plywood panel, 74 x 76 cm

pigments:  
cochineal  
fustic  
indigo  
lac  
madder



cat. 14, *Essence 9*, 2023, organic pigments on plywood panel, 74 x 76 cm

Cochineal  
(*Dactylopius coccus*)  
red from insect

Fustic  
(*Maclura tinctoria*)  
yellow from wood,

Indigo  
(*Indigofera tinctoria*)  
Maya Blue, from (indigo extract) with the  
addition of Bentonite (clay)

Lac  
(*Kerriea lacca*)  
red from resin created by scale insect (same as  
shellac)

Madder  
(*Rubia tinctorum* and (*Rubia*) *Cordifolia*)  
pink – red from root

Weld  
(*Reseda luteola*)  
yellow from leaves and flowers

Utopia Art Sydney  
983 Bourke St Waterloo NSW 2017

Telephone: + 61 2 9319 6437  
email: [art@utopiaartsydney.com.au](mailto:art@utopiaartsydney.com.au)  
[www.utopiaartsydney.com.au](http://www.utopiaartsydney.com.au)

catalogue design Allana McAfee  
artwork photography Dorian Photographics

© Utopia Art Sydney



Liz Coats *Essence*  
experiments with organic pigments